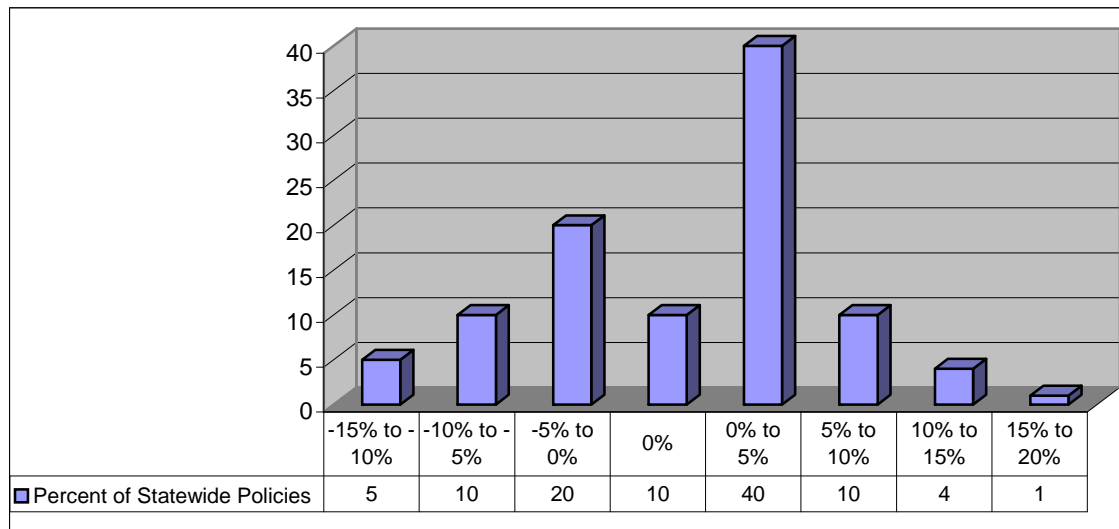


Exhibit H Louisiana Rate Revision Questionnaire

For private passenger automobile, homeowner, and medical malpractice insurance, the LDOI requests that the following information be provided.

1. Provide a histogram depicting the percentage (%) of policyholders statewide that will receive a rate change by 5-point increments. A sample is provided below. If you are unable to provide an exact distribution of policyholders by increment, then an estimate will be acceptable.



2. Please provide a brief description of the risks that are at or near the maximum estimated rate change.
3. What is the number of policyholders at the statewide minimum and maximum percentage rate change?